



**SAFETY FOR  
EVERYBODY...**



**EXTREMELY SAFE.**

# EMMA SAFETY FOOTWEAR

## WE CARE, WORK SAFE!

For 85 years, Dutch Emma Safety Footwear has been producing safety shoes for hard workers all over the world.

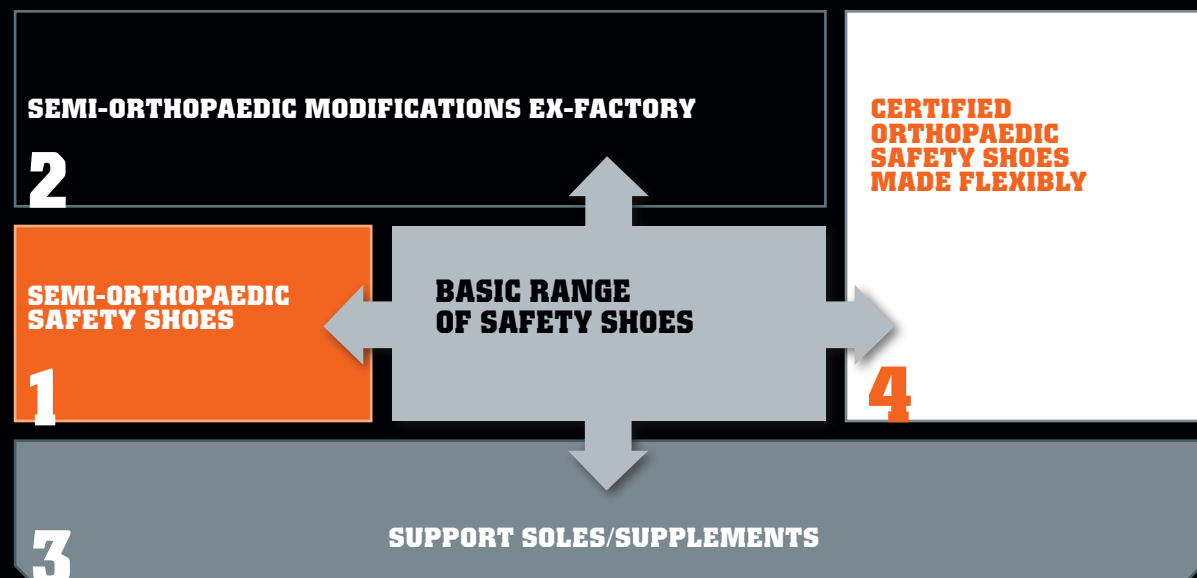
For every sector or profession that normal shoes are no match for, there is always an EMMA safety shoe that can take on the challenge. Right from design, acquiring raw materials for production and distribution, we have complete control over the required quality and safety standards. Emma combines traditional craftsmanship with the latest technology so you can rely blindly on your safety shoes.

## SAFETY FOR EVERYBODY

For 90% of those wearing safety shoes a regular model of safety shoe, like the ones in our range, is quite sufficient; however 9% of wearers achieve the best level of comfort with small to medium modifications to their safety shoes; 1% of wearers even require a safety shoe that is entirely custom-made. At EMMA we promote "safety for everybody" and that is why we are introducing a complete range with

(semi-) orthopaedic solutions. This means that everyone can get to work wearing safety shoes bearing the full ISO certification. In the diagram below you can find the various solutions that we offer besides our standard range of safety shoes. In this folder we would like to tell you more about the solutions we have developed.

### SAFETY SHOES AND (SEMI-) ORTHOPAEDIC SOLUTIONS





## EXTRA ROOMY AND A RAISED TOE CAP

Some of those wearing safety shoes require a special insole. This can present a challenge in our standard shoes when it comes to space. That is why we have developed the models Comodius and Constans.



**COMODIUS**



**CONSTANS**

Both shoes allow extra space and have a raised toe cap. This means that there is no problem to fit the appropriate insole. The shoes Comodius and Constans are classed as S3 in the safety classification and are finished off with a high quality full-grain leather upper and lined with Nappa leather. Both shoes meet all the relevant European safety standards. The Comodius and Constans models are part of the EMMA range and may be ordered through our dealers.

### IDEAL IN CASES SUCH AS:

1. WIDE FEET
2. OEDEMA (SWOLLEN FEET)
3. HAMMER TOES
4. CLAW TOES

## 19 SEMI-ORTHOPAEDIC MODIFICATIONS EX-FACTORY

Sometimes it is necessary to make semi-orthopaedic modifications to our shoes to ensure a perfect fit and to optimise comfort. EMMA is able to make such changes in its own factory.

Our staff from the EMMA mobile fitting service will take measurements and carry out a foot scan on site. In this way we are able to identify the necessary modifications. This information is then used in the factory and the new shoes are adapted immediately after production. Arch support, heel stabilisation and some extra room for the toes? Everything is possible to achieve the perfect shoe.

### MANY OPTIONS

EMMA is able to make changes ex-factory to all shoes with a PU/PU sole in our basic range. With 19 different modifications possible we can be sure to supply a shoe that fits perfectly.



### IDEAL IN CASES SUCH AS:

1. LEG LENGTH DISCREPANCY
2. HAGLUND'S DEFORMITY
3. DORSAL EXOSTOSIS
4. MILD HALLUX VALGUS (BUNION)
5. HALLUX LIMITUS/RIGIDUS



## CERTIFIED SUPPORT SOLES WITH HYDRO-TEC® ORTHO COVER

When semi-orthopaedic solutions are unable to solve the problem a tailor-made support sole can be the answer. In this case you will be referred to a podiatrist or orthopaedist who will measure and produce these support soles. In the past they made these using their own materials, meaning that they were not certified for use in an EMMA safety shoe.

EMMA now offers the podiatrist or orthopaedist the chance to use the EMMA HYDRO-TEC® ORTHO COVER and in doing so allows a certified solution to be offered, when used in combination with an EMMA safety shoe.

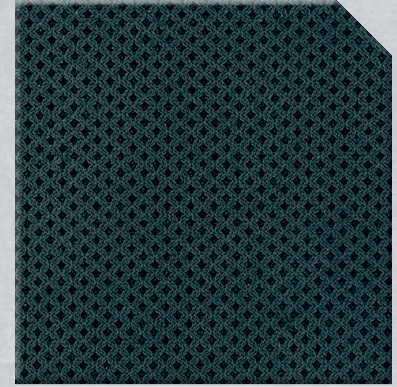
### CERTIFIED ACCORDING TO THE EUROPEAN STANDARD AND ISO 20345:2011

EMMA supplies the podiatrist or orthopaedist with two types of material for the cover, namely the HYDRO-TEC® ORTHO COVER MESH and the HYDRO-TEC® ORTHO COVER SUEDEC. When these materials are used according to EMMA's guidelines and in combination with an EMMA safety shoe, then the shoe remains certified and the shoe meets the strictest of European safety standards.

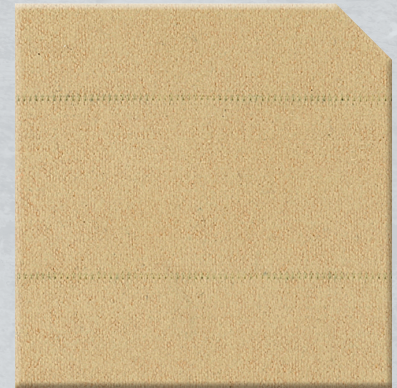


**FRECOMA**

Hydro-Tec® Ortho Cover materials are available via [frecoma.nl](http://frecoma.nl), supplier of innovative products for orthopedic specialists.



**HYDRO-TEC®  
ORTHO COVER MESH**



**HYDRO-TEC®  
ORTHO COVER SUEDEC**



To guarantee this certification the podiatrist/orthopaedist concerned receives a unique code after registration of their work on the Emma portal site. There is also a registration of the end user using the special insole together with the type of Emma shoe. In this way the customer, shoe and sole are all inextricably linked to each other under the certification.

### IDEAL IN CASES SUCH AS:

1. FRONT FOOT PROBLEMS/  
METATARSALGIA
2. HEEL SPUR/PLANTAR  
FASCIITIS
3. MILDLY COMPLEX MIS-  
ALIGNMENT OF THE FOOT
4. MORTON'S NEUROMA
5. SESAMOIDITIS



## THE PERFECTLY FITTING ORTHOPAEDIC SAFETY SHOE WITH NO COMPROMISE

When semi-orthopaedic modifications and/ or support soles are unable to achieve the desired result EMMA can now offer a new alternative: certified orthopaedic safety shoes made in a flexible manner. This allows us to live up to our motto "safety for everybody"; with this solution it really is possible for everyone to wear a certified safety shoe.



This safety shoe is made possible by working in co-production. The orthopaedic shoe technician is responsible for measuring the shoes and producing the last. After that the company OSK Schoentechiek takes care of shoe production. To do so EMMA provides the certified materials and takes responsibility for certifying the shoe. EMMA has developed and certified a range of four different safety shoes for this purpose.

### FLEXIBLE METHOD AND CERTIFICATION STANDARD EN ISO 20345:2011

This flexible production method allows the orthopaedic shoe technician total freedom. As long as EMMA materials are used in accordance with established guidelines then the shoe may retain its certification under the European safety standard EN ISO 20345:2011. This allows the shoe technician to create the perfect fit without having to compromise.

#### IDEAL IN CASES SUCH AS:

1. PARTICULAR SHAPES AND SIZES OF FEET THAT DO NOT FIT A SEMI-ORTHOPAEDIC SAFETY SHOE
2. OSTEOARTHRITIS OF THE ANKLE
3. FOOT DROP
4. LEG LENGTH DISCREPANCIES GREATER THAN 2 CM
5. FEET THREATENED BY DIABETES MELLITUS OR RHEUMATOID ARTHRITIS



**ORTHO-NORDIC**



**ORTHO-NESTOR**



**ORTHO-PAUL**



**ORTHO-PATRICK**



EMMA SAFETY FOOTWEAR

---

MAASTRICHTERLAAN 82  
6241 JB BUNDE  
(MAASTRICHT)

---

POSTBUS 1212  
6201 BE MAASTRICHT  
THE NETHERLANDS

---

TEL +31 (0)43 800 1950  
SALES@EMMASF.COM

**EMMA**

**EXTREMELY SAFE.**

[EMMASAFETYFOOTWEAR.COM](http://EMMASAFETYFOOTWEAR.COM)